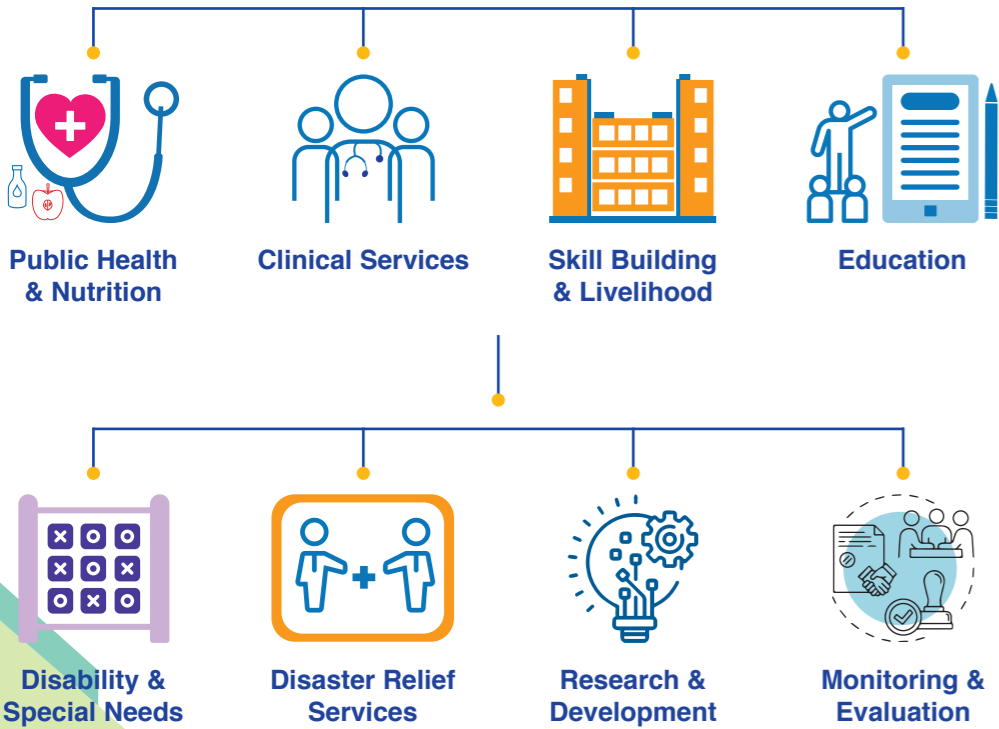


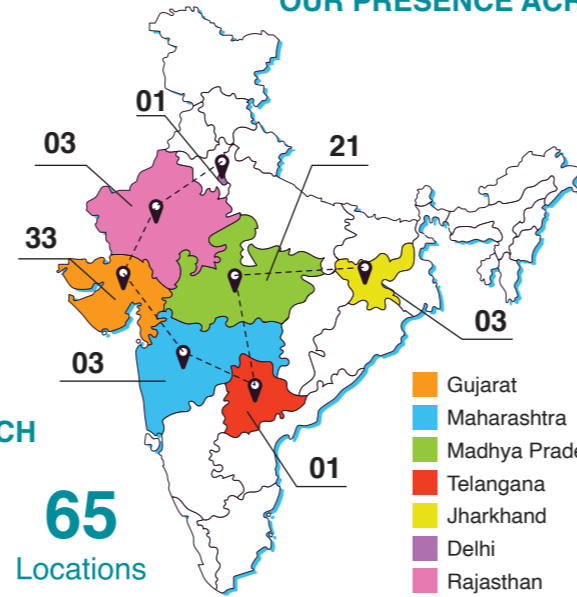


National Tuberculosis Elimination Programme (NTEP)

AREAS OF INTERVENTION



OUR PRESENCE ACROSS INDIA



OUR REACH

07 States
65 Locations



Head Office: Nijanand Ashram Premises, Adjoining L&T Knowledge City, On NH - 48, Tal. & Dist. Vadodara - 390019, Gujarat **M.:** 0265 7572890011/15 **W.:** www.deepakfoundation.org **E.:** deepakfoundation@deepakfoundation.org

Maharashtra
Deepak Foundation
Flat No. 4, Prasad Apartments
425/42 Gultekdi
Pune - 411037
M. No.: 9960435705

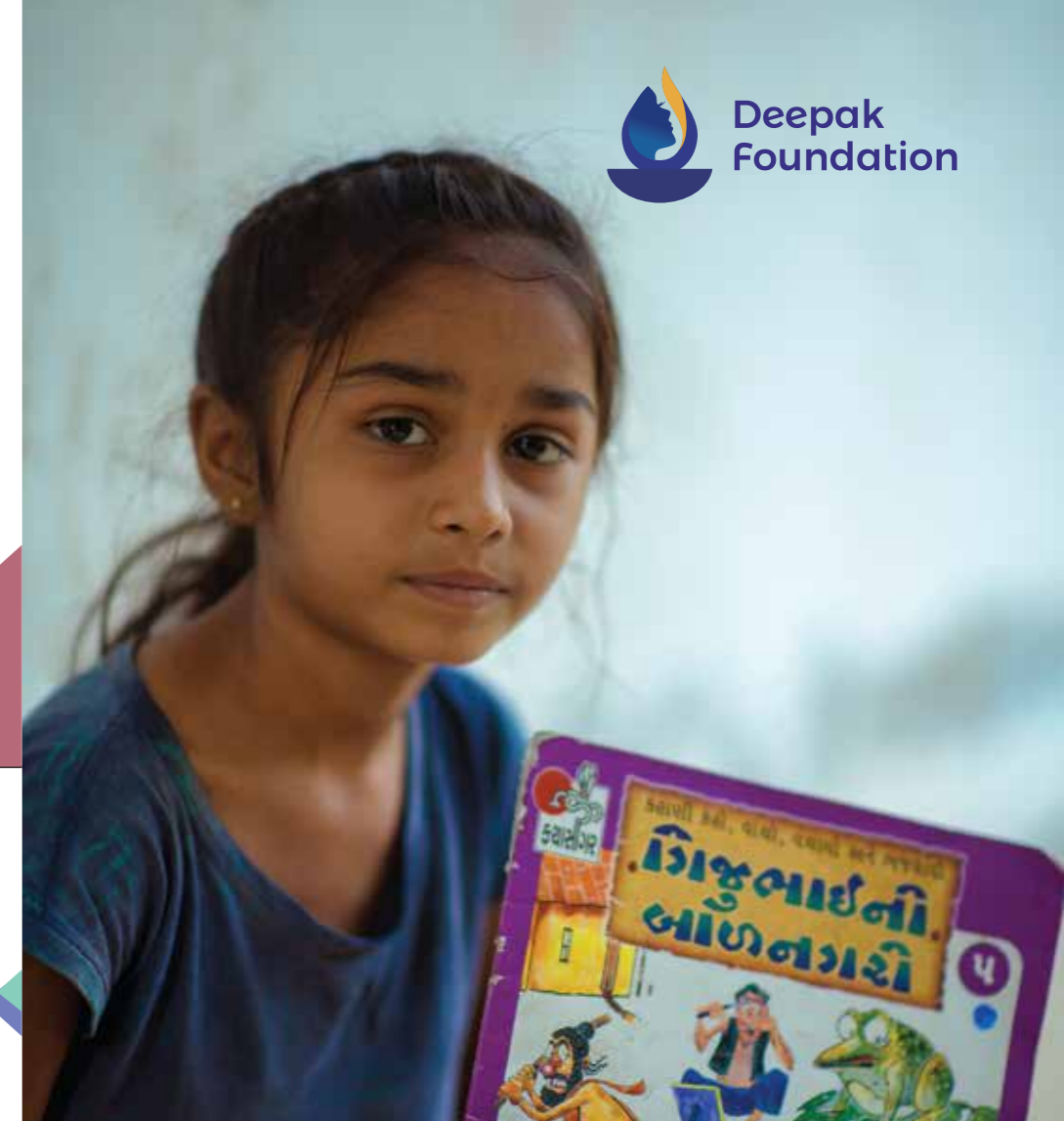
Jharkhand
Deepak Foundation
Beside Urban Haat, Birangara
Opp. Police Station,
Madhuban, Shikharjee
Giridih - 825329
M. No.: 9334209502

Telangana
Deepak Foundation
90F, IDA, Phase-1, Unit-1
Jeedimetla
Hyderabad - 500055
M. No.: 9392705685

New Delhi: Deepak Foundation, J 1/7 DLF City Phase 2, Gurgaon - 122002

Rajasthan: 13 Ambe Nagar, Municipality Colony, Behind Balaji Furniture, Chittorgarh - 312001

Madhya Pradesh: House No-29, 1st Floor, Patrakar Colony, Opp. NHM Office, Bhopal - 462003



ENLIGHTENING LIVES

VISION

Empowering women to ensure holistic development, economic stability and a life of dignity.



MISSION

Creating a socially inclusive and sustainable environment among the underprivileged and unreached communities, particularly women and children by providing health care, education, capacity building and livelihood opportunities. We envisage a world free of distress, disease, deprivation, exploitation and subjugation, ensuring the overall wellbeing of the family, society and community.

For the last 40 years, Deepak Foundation is committed towards the upliftment of the society. As one of the leading non-profit organizations in Gujarat with rapidly growing Pan-India presence, the Foundation thrives to empower the underprivileged and unreached communities in India. Our activities impact over 4,00,000 lives annually. The Foundation is registered under the Bombay Public Trust Act, 1950.



15,000 sqft
of office and
training centre

3,000 sqft
of residential facility for
trainees and faculty

OUR CORE FUNCTIONS

1. Preventive medical services through maternal and child care health facilities and mobile health units
2. Ensuring sustainable livelihood for marginalized communities
3. Skills building of front line functionaries in health and livelihood sectors
4. Research and Development
5. Empowering underprivileged and marginalized women
6. Improving literacy level among children
7. Holistic development of children with special needs
8. Public Private Partnership initiatives
9. CSR consultancy services



PUBLIC HEALTH & CLINICAL SERVICES

We provide public health and nutrition facilities to the marginalized population in rural and tribal areas. Clinical services are provided across urban slums, rural and tribal areas.

AREAS OF INTERVENTION



RESEARCH & DEVELOPMENT

The research & development wing envisages to explore the new arenas of action research for testing and developing scale up models. It aims to inform practitioners and policy makers about reforms.



EDUCATION

We strive to ensure preschool education of all children living in the rural, tribal and slum areas.

SKILLS BUILDING & LIVELIHOOD

We impart training & upskilling to underprivileged and unreached communities.



DISABILITY & SPECIAL NEEDS

We work with children with special needs to empower them to live a life of dignity and independence.



CSR PROJECTS

The Foundation provides CSR consultancy services to several corporates since 2013 and also conducts needs assessment, baseline impact evaluation studies for various public and private organizations.

MOBILE LIBRARY

Mobile Library aims to improve children's reading, cognitive and intellectual ability. It covers school drop-outs and enrolled student who have poor reading abilities.



MOBILE HEALTH UNIT (MHU)

MHU functions with the aim of providing affordable, accessible and quality healthcare to unreached and under-privileged rural and tribal areas.

